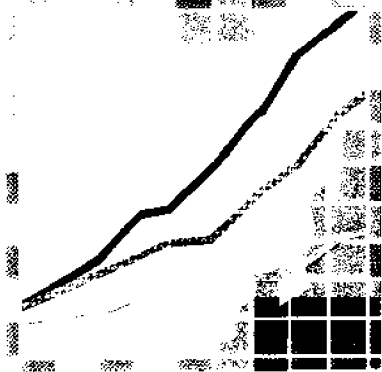


Australian
Bureau of
Statistics

TASMANIAN

STATISTICAL INDICATORS

October 1994





TASMANIAN

STATISTICAL INDICATORS

October 1994

William P. McReynolds
Deputy Commonwealth Statistician and
Statistician of the State of Tasmania



CONTENTS

Page

Commentary	i
-----------------------------	---

Table

Population and vital statistics

1 Population	1
2 Births, deaths and marriages registered	1

Employment and unemployment

3 Labour force status — seasonally adjusted and trend series	2
4 Labour force status by region and Tasmania, males	3
5 Labour force status by region and Tasmania, females	4
6 Labour force status by region and Tasmania, persons	5
7 Teenage labour market	6
8 Employed persons by occupation	7
9 Employed wage and salary earners, sector and industry	8
10 Average hours worked	9
11 Job vacancies	9
12 Industrial disputes	9

Wages and prices

13 Average weekly earnings of employees	10
14 Award rates of pay indexes	10
15 Summary of annual movements in wages and prices	11
16 Consumer price index: house price index numbers	11
17 Consumer price index	12
18 Price index of materials used in building other than house building	13, 14

Production

19 Miscellaneous indicators of production (production of selected commodities)	15
20 Livestock slaughtering, numbers	16
21 Livestock slaughtering—seasonally adjusted and trend series	16
22 Meat production, Tasmania	17
23 Principal mineral concentrates produced	17
24 Sawmills and plywood mills: logs delivered and timber produced	18
25 Chipping and grinding of wood	18
26 Logs delivered for milling or chipping	18

Building

27 Building approvals	19
28 Dwelling commencements	19

Finance

29 Banking statistics	20
30 Private new capital expenditure by type of asset	20

Tourism

31 Passenger arrivals and departures	21
32 Passenger arrivals by air and sea into Tasmania	21
33 Accommodation statistics	22

Transport and trade

34 Registrations of new motor vehicles	23
35 Turnover of retail establishments at current prices	23

Major Statistical Indicators

36 Australian and State figures	24
---	----

ENQUIRIES

For further information, contact the Information Officer on (002) 20 5800 or write to the Deputy Commonwealth Statistician, GPO Box 66A, Hobart, 7001 (1st floor, 175 Collins Street, Hobart).

Publications issued by the Tasmanian Office during September 1994

<i>Catalogue number</i>	<i>Publication</i>	<i>Date of release</i>
4508.6	Court Statistics, Tasmania, 1993 (Final Issue)	16/9/94
8635.6	Tourist Accommodation, Tasmania, June 1994	20/9/94
8731.6	Building Approvals, Tasmania, July 1994	14/9/94
8741.6	Dwelling Unit Commencements, Tasmania, June 1994	8/9/94
9303.6	Motor Vehicle Registrations, Tasmania, July 1994	6/9/94
1303.6	Statistical Indicators, Tasmania, September 1994	7/9/94

Symbols and other usages

The following standard symbols are used in publications of the Tasmanian Office of the Bureau:

ASIC	Australian Standard Industrial Classification
M	males
F	females
P	persons
n.a.	not available
n.e.c.	not elsewhere classified
n.e.i.	not elsewhere included
n.p.	not available for separate publication, but included in totals where applicable
n.y.a.	not yet available
p	preliminary — figure or series subject to revision
r	figure or series revised since previous issue
s	subject to sampling variability too high for most practical purposes
..	not applicable
—	nil or rounded to zero
—	break in continuity of series (where a line is drawn between two consecutive figures in the same column, or alongside two or more figures in consecutive columns)
(M)	Municipality
(C)	City

Where figures have been rounded, discrepancies may occur between sums of the component items and totals.

Values are shown in Australian currency.

Commentary

Definitions

Trend series estimates are used to "smooth" data to enable longer term trends to become more noticeable. They are the preferred series to use when making a comparison over time, eg. 12 months.

Original series estimates (or unadjusted estimates) are the survey data as collected, generalised to the relevant population. These estimates have not been seasonally adjusted or trend adjusted ("smoothed").

Employment

State's trend series figures —

The Australian and State *trend series* comparisons, shown on page 24, indicate that there was an increase of 1.8 per cent in Tasmania's employment over the year to August 1994. The largest percentage increase in employment was in Queensland (5.3 per cent). The next highest increase in employment was in Western Australia (3.8 per cent), followed by NSW (3.2 per cent) and Victoria (2.9 per cent). South Australia had an increase in employment of 1.8 per cent.

Regional Tasmania's original series figures —

In the Hobart and Southern Statistical Division the *unadjusted* estimate of employment increased by 4500 between June 1993 and June 1994 to 98 500. The estimate of employment in the Mersey-Lyell Statistical Division was 44 100 in June 1994, an increase of 2100 on the figure for June 1993. Employment in the Northern Statistical Division decreased by 4100 between June 1993 and June 1994 to 52 300. (See tables 3-8, pages 2-7.)

Unemployment

Tasmania's trend series figures —

The Tasmanian provisional *trend series* estimate of 22 300 unemployed persons in August 1994 was a decrease of 6000 on the figure for August 1993 of 28 300. The estimate of the unemployment rate of 10.3 per cent in August 1994 was a decrease compared to the estimate of the unemployment rate of 12.9 per cent in August 1993. (See tables 3-8, pages 2-7.)

The Labour Force

In August 1994 there was an *unadjusted* estimate of 366 200 civilian Tasmanians aged 15 or more. There were an estimated 217 000 persons (based on *trend series* estimates) in the labour force. The *trend series* estimate of the labour force participation rate in August 1994 was 59.3 per cent, compared with the figure of 60.2 per cent in August 1993.

For males, the *trend series* estimate of the participation rate was 70.2 per cent, compared with 71.0 per cent for August 1993. For females, the *trend series* estimate of the participation rate was 48.7 per cent (compared with 49.8 per cent in August 1993).

(See table 3, page 2.)

Employed Wage and Salary Earners

In March 1994 there were approximately 142 500 employed wage and salary earners in Tasmania. In March 1992 the figure was 144 700 employed wage and salary earners.

In February 1994 the Tasmanian public sector accounted for 31.7 per cent of all employed wage and salary earners. Overall, the category Community services had the highest industry representation — 30.0 per cent — compared with the equivalent figure of 24.3 per cent recorded in February 1992. The next highest industry grouping

was Wholesale trade and Retail trade (19.7 per cent, compared with 19.0 per cent in February 1992) and Manufacturing (13.0 per cent, compared with 16.8 per cent in February 1992).

In February 1994, women made up 45.6 per cent of employed wage and salary earners. In February 1992, the equivalent figure was 44.0 per cent.

(See table 9, page 8.)

Award Rates of Pay Indexes

The annual movement from July 1993 to July 1994 of weekly award rates of pay indexes for Tasmania was 1.0 per cent for full-time adult females and 2.1 per cent for full-time adult males. For Australia, the figures were 1.2 per cent for females and 1.1 per cent for males.

For full-time adult female employees in Tasmania, the largest industry increases over this 12 month period occurred in Recreation, personal and other services (3.3 per cent); and Manufacturing; Wholesale and retail trade; Public administration and defence (each 2.3 per cent).

For the same period for full-time adult male employees in Tasmania, the largest industry increases occurred in Public administration and defence (11.5); and Recreation, personal and other services (2.5 per cent).

The largest occupation increases over the same period for full-time adult female employees occurred in Plant and machine operators, and drivers (2.5 per cent); and Tradespersons (1.9 per cent).

For full-time adult male employees the largest occupation increases over the period occurred in Labourers and related workers (4.0 per cent); and Plant and machine operators, and drivers (3.1 per cent).

(See table 14, page 10.)

House Price Indexes

For the twelve months ended June 1994, Hobart recorded a 6.1 per cent increase in the cost of established houses. The extremes in price movement recorded were a 13.5 per cent increase in prices in Darwin and a five per cent decrease in Adelaide.

For the same period, Hobart recorded a 2.7 per cent increase in the cost of project homes. Darwin recorded the highest increase over the period, 8.5 per cent, while Canberra recorded a 0.7 per cent decrease in the cost of project homes.

The movement recorded in Hobart for the June Quarter 1994 was 2.4 per cent for established houses and 1.4 per cent for project homes.

House Price Indexes: Eight Capital Cities, June Quarter 1994, ABS Catalogue No. 6416.0, released on 9 September 1994, \$27.50

Gross State Product

The trend estimate of the Gross State Product (GSP) of Tasmania for the June quarter 1994 was \$2347 million. This represents a 2.2 per cent increase on the previous quarter (\$2297 million) and a 5.1 per cent increase on the June quarter 1993 (\$2233 million).

This was the second highest growth rate of all the States, coming after considerably slower growth in the first half of 1993-94. The growth in the June quarter GSP was due predominantly to a 3.2 per cent rise in the Gross Operating Surplus of the manufacturing, retail and transport industries.

In comparison, the trend estimate of the Gross Domestic Product (GDP) of Australia for the June quarter 1994 showed a 1.5 per cent increase on the previous quarter and a 5.5 per cent increase on the June quarter 1993.

Australian National Accounts - State Accounts, ABS Catalogue No 5242.0, released on 15 September 1994, \$26.00

Housing Finance

The trend estimate for new secured housing finance commitments entered into in Tasmania during July 1994 was 1029, valued at \$64.8 million. This represented a 1.3 per cent decrease on the number (1043) and a 0.2 per cent increase on the value (\$64.7 million) for June 1994.

These figures also represent a 3.9 per cent increase on the number (990) and a 12.9 per cent increase on the value (\$57.4 million) for July 1993. In comparison, the corresponding national figures showed a 13.7 per cent increase on the number and a 21.0 per cent increase on the value for July 1993.

The fall of 1.3 per cent in the July 1994 trend estimate for number of new secured housing finance commitments in Tasmania continued the decline which began in February 1994. In comparison, the national trend estimate for July 1994 fell by 1.2 per cent continuing a decline which began in April 1994.

Housing Finance for Owner Occupation, ABS Catalogue No 5609.0, released on 19 September 1994, \$11.00

Livestock slaughtering

The trend (this indicates the underlying direction of the series) for cattle and calves was downward while for both sheep and pigs the trend was upward.

Livestock slaughtering for cattle and calves continued its downward trend from the peak in October 1993 when 18 400 were slaughtered. For July 1994 the trend series shows 15 400 cattle and calves were slaughtered, This was down 12.1 per cent on the July 1993 level of 17 500.

A high level of sheep and lambs slaughtered during June and July this year has pushed the trend series upward. The trend level of 96 500 for July 1994 is 15.9 per cent above 83 200 sheep and lambs slaughtered in July 1993.

The trend for pigs slaughtered shows a peak in December 1993 and January 1994 of 8000, followed by a slight drop in April and again recovering to the 8000 level for July this year. This is slightly above the level at July 1993.

(See table 21, page 16.)

Building approvals

There were 309 new dwelling units approved during July 1994 in Tasmania, a slight increase on the number recorded for June 1994, and a nine per cent decrease on the figure for July 1993 (340).

For the twelve months ended July 1994 there were 4116 new dwelling units approved, slightly higher than the 4108 units recorded for the previous corresponding 12 months.

The latest monthly trend estimates for the number of dwelling units approved have levelled out after several months of decline.

The highest number of dwelling units approved in July 1994 was recorded by the City of Launceston with 31, followed by the City of Hobart with 30, the Municipality of Meander Valley with 28 and the City of Glenorchy with 24.

The value of new residential building approved, at current prices, in July 1994 was \$20.9 million, compared with the June 1994 figure of \$23.3 million and the July 1993 figure of \$23.7 million.

The value of all buildings approved, at current prices, for July 1994 was \$31.2 million, compared with \$38.0 million in June 1994 and \$39.2 million in July 1993.

The value of all buildings approved, at average 1989-90 prices, in the June quarter 1994 was \$103.4 million, compared with the March quarter 1994 figure of \$98.4 million and the June quarter 1993 figure of \$96.3 million.

(See table 27, page 19.)

Retail

The trend estimate for turnover of retail and service establishments for July 1994, in Tasmania, was \$218.4 million, an increase of more than five per cent on the July 1993 figure of \$207.2 million. After a period of decline or zero growth in the early part of 1994, the estimate for Tasmania has shown moderate growth over the last three months.

The estimate of turnover for July 1994, for Australia (\$8 730.5 million), was nearly seven per cent higher than for July 1993. The trend estimate of turnover is now showing growth of around 0.5 per cent for the first seven months of 1994.

All States, except New South Wales which recorded zero growth in July, are showing growth over recent months.

In original terms, the estimate of retail turnover in July 1994, for Tasmania, was \$212.1 million, an increase of nearly four per cent on the figure recorded for June 1994 and five per cent more than the figure recorded for July 1993.

(See table 35, page 23.)

New motor vehicle registrations

There were 1152 new motor vehicles (excluding motorcycles) registered in Tasmania during July 1994. This was over seven per cent less than for June (1243), and an increase of more than 16 per cent on the number recorded for July 1993.

Registrations for the 12 months ended July 1994 were two per cent more than for the 12 months ended July 1993.

(See table 34, page 23.)

Population and Vital Statistics

Table 1. Population, Tasmania

Year or quarter	Estimated resident population at end of period	Natural increase (a)	Net estimated migration gain	Total population growth	Annual growth rate (b)
	('000)	('000)	('000)	('000)	(%)
Year ended 30 June —					
1990	462.2	3.4	3.6	6.9	1.52
1991	466.8	3.3	1.2	4.6	1.01
1992 p	469.7	3.2	- 0.3	2.9	0.62
1993 p	471.4	3.2	- 1.5	1.8	0.37
Quarter					
1992 —					
March p	469.2	0.9	- 0.1	0.8	0.72
1993 —					
March p	471.3	0.9	- 0.3	0.5	0.44
June p	471.4	0.9	- 0.7	0.1	0.37
September	471.9	0.7	- 0.3	0.4	0.39
December	472.1	0.8	- 0.5	0.2	0.29
1994 —					
March p	472.2	0.9	- 0.7	0.1	0.20

(a) Excess of live births registered over deaths registered (based on usual State of residence).

(b) Percentage growth from same quarter in previous year.

Table 2. Births, deaths and marriages registered, Tasmania

Year or quarter	Births		Deaths		Infant mortality (a)		Marriages	
	No.	Rate (b)	No.	Rate (b)	Deaths	Rate (c)	No.	Rate (b)
Year ended								
31 December —								
1989	6 813	14.96	3 690	8.10	72	10.6	3 111	6.83
1990	7 043	15.25	3 713	8.04	63	8.9	3 026	6.55
1991	6 857	14.69	3 666	7.86	59	8.6	3 069	6.58
1992	6 956	14.81	3 722	7.92	42	6.0	3 081	6.56
1993 p	6 795	n.a.	3 620	n.a.	35	5.2	3 055	n.a.
Quarter								
1991 —								
March	1 784	..	894	..	22	12.3	976	..
1993 —								
March	r 1 714	..	r 863	..	r 14	r 8.2	820	..
1993 —								
June	1 733	..	r 884	..	r 8	5.2	797	..
September	r 1 710	..	993	..	r 11	5.8	431	..
December	r 1 647	..	r 878	..	r 4	3.0	786	..
1994 —								
March p	1 800	..	948	..	9	5.0	914	..

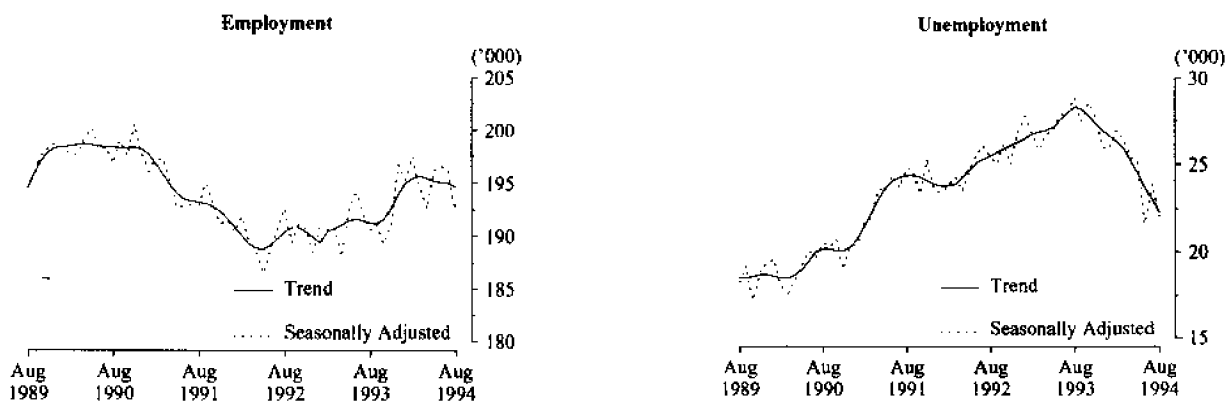
Employment and Unemployment

Table 3. Labour Force Status, Tasmania (a): Seasonally Adjusted And Trend Series

Month	Seasonally adjusted series				Trend series (b)			
	Employed (<i>'000</i>)	Unem- ployed (<i>'000</i>)	Unemploy- ment rate (%)	Partici- pation rate (%)	Employed (<i>'000</i>)	Unem- ployed (<i>'000</i>)	Unemploy- ment rate (%)	Partici- pation rate (%)
MALES								
1993 -								
August	109.0	18.2	14.3	71.0	109.5	17.7	13.9	71.0
September	109.8	16.6	13.2	70.6	109.7	17.6	13.8	71.1
October	110.1	18.0	14.1	71.5	110.2	17.5	13.7	71.2
November	109.0	17.8	14.1	70.7	110.9	17.4	13.6	71.5
December	113.4	16.6	12.8	72.4	111.6	17.4	13.5	71.9
1994 -								
January	112.3	16.9	13.1	71.9	112.2	17.5	13.5	72.2
February	113.3	17.9	13.6	73.0	112.4	17.4	13.4	72.3
March	112.2	18.0	13.9	72.4	112.4	17.1	13.2	72.1
April	111.2	16.8	13.1	71.2	112.3	16.6	12.9	71.7
May	112.4	16.0	12.5	71.4	112.2	15.9	12.4	71.2
June	112.5	14.1	11.1	70.4	112.2	15.2	11.9	70.8
July	112.6	14.5	11.4	70.7	112.3	14.6	11.5	70.5
August	112.0	14.3	11.3	70.2	112.3	14.0	11.1	70.2
FEMALES								
1993 -								
August	81.6	10.8	11.7	49.8	81.8	10.5	11.4	49.8
September	81.3	10.9	11.8	49.7	81.5	10.5	11.5	49.6
October	79.3	10.5	11.7	48.4	81.5	10.3	11.3	49.5
November	82.2	9.9	10.8	49.6	81.8	10.0	10.9	49.5
December	83.4	9.4	10.1	49.9	82.3	9.6	10.4	49.5
1994 -								
January	83.0	9.0	9.8	49.5	82.8	9.2	10.0	49.5
February	84.2	9.1	9.8	50.2	83.1	8.9	9.7	49.5
March	82.4	8.4	9.2	48.8	83.2	8.8	9.5	49.4
April	81.5	8.7	9.6	48.4	83.1	8.7	9.4	49.3
May	83.8	9.2	9.9	50.0	83.0	8.6	9.4	49.2
June	84.1	7.5	8.2	49.2	82.9	8.5	9.3	49.1
July	83.4	9.4	10.1	49.9	82.7	8.4	9.2	48.9
August	80.6	7.8	8.8	47.5	82.4	8.3	9.2	48.7
TOTAL								
1993 -								
August	190.6	28.9	13.2	60.2	191.3	28.3	12.9	60.2
September	191.1	27.5	12.6	60.0	191.2	28.2	12.8	60.2
October	189.3	28.6	13.1	59.7	191.7	27.8	12.7	60.2
November	191.2	27.8	12.7	60.0	192.7	27.4	12.5	60.3
December	196.8	26.0	11.7	61.0	194.0	27.0	12.2	60.5
1994 -								
January	195.3	25.9	11.7	60.5	195.0	26.7	12.0	60.6
February	197.5	27.0	12.0	61.4	195.5	26.3	11.9	60.7
March	194.6	26.4	11.9	60.4	195.7	25.9	11.7	60.6
April	192.6	25.4	11.7	59.6	195.5	25.2	11.4	60.3
May	196.3	25.2	11.4	60.5	195.2	24.5	11.1	60.0
June	196.6	21.6	9.9	59.6	195.1	23.7	10.8	59.8
July	196.1	23.9	10.9	60.1	195.0	23.0	10.5	59.5
August	192.6	22.1	10.3	58.6	194.7	22.3	10.3	59.3

(a) For explanation of terms and concepts, refer to *The Labour Force, Australia* (Catalogue No.6203.0). (b) Trend series revised each month. Users should be aware that the latest observations may be revised substantially.

Tasmanian Labour Force



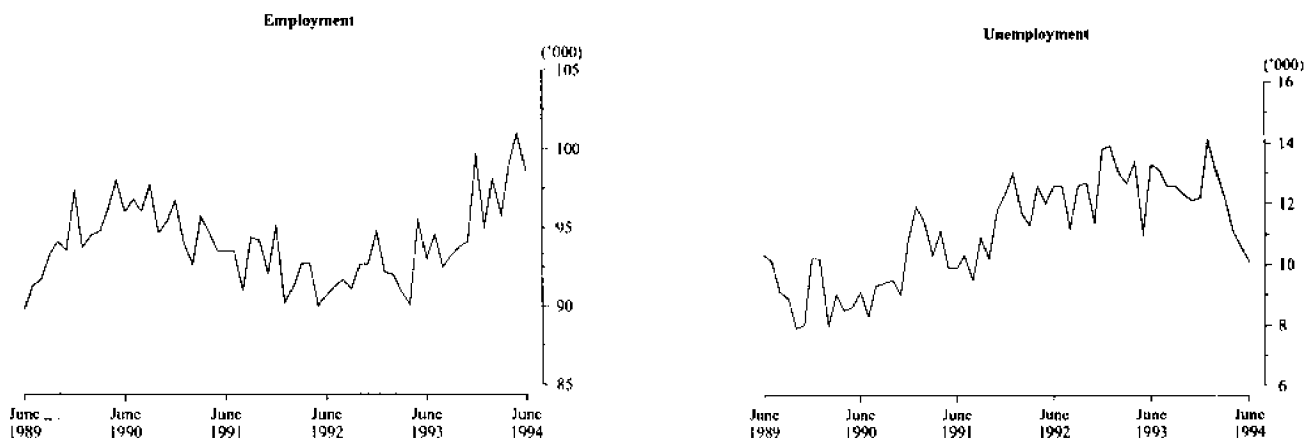
Employment and Unemployment

Table 4. Labour force status, by region and Tasmania, males (a) (b)

Month	Total employed	Total unemployed	Unemployment rate	Participation rate
	('000)	('000)	(%)	(%)
HOBART AND SOUTHERN STATISTICAL DIVISIONS				
1991 - June	53.3	6.2	10.5	70.3
1993 - June	51.9	7.7	12.9	67.9
1994 - April	55.0	6.7	10.8	71.0
May	54.7	6.8	11.0	70.4
June	53.5	6.7	11.1	68.6
NORTHERN STATISTICAL DIVISION				
1991 - June	32.4	4.0	11.0	74.5
1993 - June	32.1	5.2	13.9	73.7
1994 - April	31.1	4.5	12.6	70.6
May	31.6	4.6	12.7	71.4
June	31.1	4.2	11.9	71.2
MERSEY-LYELL STATISTICAL DIVISION				
1991 - June	26.6	5.0	15.9	74.4
1993 - June	25.2	5.1	16.8	74.6
1994 - April	26.3	4.3	14.1	71.9
May	26.3	3.7	12.3	71.7
June	27.2	3.4	11.1	72.0
TASMANIA				
1991 - June	112.3	15.3	12.0	72.5
1993 - June	109.2	17.9	14.1	71.1
1994 - April	112.3	15.5	12.1	71.1
May	112.6	15.1	11.8	71.0
June	111.8	14.3	11.3	70.1

(a) For explanation of terms and concepts, refer to *The Labour Force, Australia* (Catalogue No. 6203.0). (b) Data in this table are original series, i.e. they are not part of a seasonally adjusted or a trend series. Accordingly, care should be exercised when using this data. New monthly data from each quarter (March, June, September and December) is published two months after the quarter.

Hobart and Southern Statistical Divisions - Persons



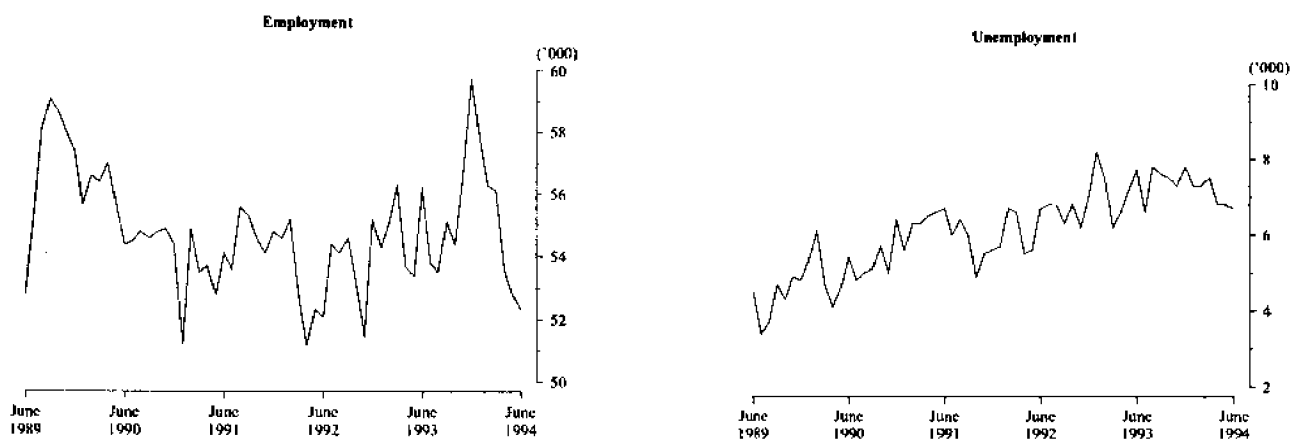
Employment and Unemployment

Table 5. Labour force status, by region and Tasmania, females (a) (b)

Month	Total employed (^{'000})	Total unemployed (^{'000})	Unemployment rate (%)	Participation rate (%)
HOBART AND SOUTHERN STATISTICAL DIVISIONS				
1991 - June	41.5	3.7	8.2	51.1
1993 - June	42.1	5.7	11.8	52.0
1994 - April	44.2	4.5	9.2	52.4
May	46.3	3.8	7.6	53.8
June	45.1	3.4	7.0	52.1
NORTHERN STATISTICAL DIVISION				
1991 - June	22.3	2.8	11.2	49.8
1993 - June	24.3	2.5	9.3	49.5
1994 - April	22.5	2.3	9.3	46.8
May	21.2	2.2	9.4	44.9
June	21.2	2.5	10.5	44.8
MERSEY-LYELL STATISTICAL DIVISION				
1991 - June	17.8	2.8	13.5	47.3
1993 - June	16.8	2.5	12.8	49.2
1994 - April	15.0	2.4	13.7	43.3
May	16.5	2.3	12.2	46.3
June	16.8	2.0	10.5	46.4
TASMANIA				
1991 - June	81.6	9.3	10.2	49.8
1993 - June	83.2	10.6	11.3	50.7
1994 - April	81.7	9.2	10.1	48.8
May	84.0	8.3	9.0	49.6
June	83.0	7.8	8.6	48.8

(a) For explanation of terms and concepts, refer to *The Labour Force, Australia* (Catalogue No. 6203.0). (b) Data in this table are original series, i.e. they are not part of a seasonally adjusted or a trend series. Accordingly, care should be exercised when using this data. New monthly data from each quarter (March, June, September and December) is published two months after the quarter.

Northern Statistical Division - Persons



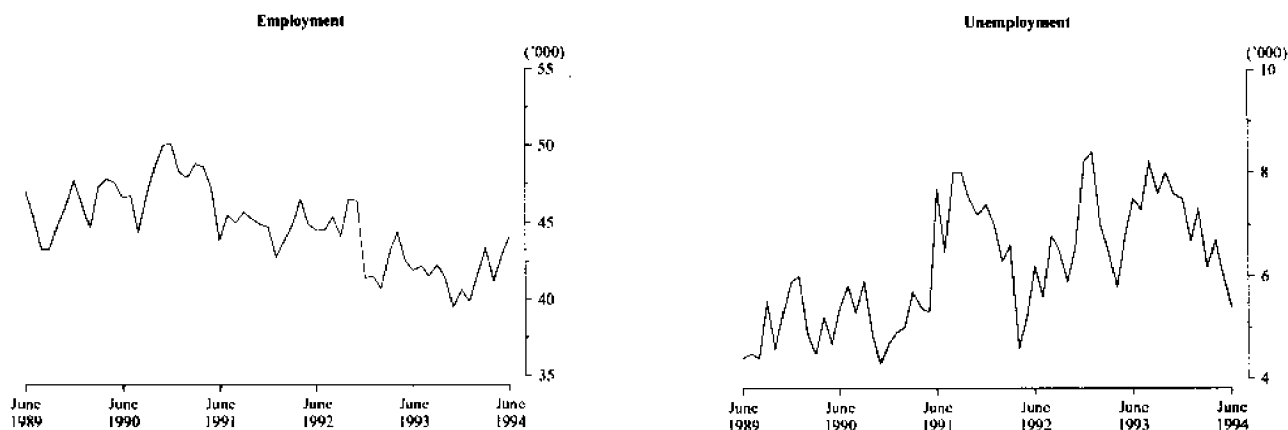
Employment and Unemployment

Table 6. Labour force status, by region and Tasmania, persons (a) (b)

<i>Month</i>	<i>Total employed</i>	<i>Total unemployed</i>	<i>Unem- ployment rate</i>	<i>Partici- pation rate</i>
	('000)	('000)	(%)	(%)
HOBART AND SOUTHERN STATISTICAL DIVISIONS				
1991 - June	94.8	10.0	9.5	60.5
1993 - June	94.0	13.3	12.4	59.8
1994 - April	99.1	11.1	10.1	61.4
May	101.0	10.6	9.5	61.8
June	98.5	10.1	9.3	60.1
NORTHERN STATISTICAL DIVISION				
1991 - June	54.7	6.8	11.1	62.0
1993 - June	56.4	7.7	12.0	61.2
1994 - April	53.6	6.8	11.3	58.4
May	52.8	6.8	11.4	58.0
June	52.3	6.7	11.3	57.6
MERSEY-LYELL STATISTICAL DIVISION				
1991 - June	44.4	7.8	14.9	60.7
1993 - June	42.0	7.6	15.3	62.1
1994 - April	41.2	6.7	14.0	58.0
May	42.8	6.0	12.3	59.1
June	44.1	5.4	10.9	59.5
TASMANIA				
1991 - June	194.0	24.6	11.2	60.9
1993 - June	192.4	28.5	12.9	60.7
1994 - April	194.0	24.7	11.3	59.8
May	196.7	23.4	10.6	60.1
June	194.9	22.2	10.2	59.3

(a) For explanation of terms and concepts, refer to *The Labour Force, Australia* (Catalogue No. 6203.0). (b) Data in this table are original series, i.e. they are not part of a seasonally adjusted or a trend series. Accordingly, care should be exercised when using this data. New monthly data from each quarter (March, June, September and December) is published two months after the quarter.

Mersey Lyell Statistical Division - Persons



Employment and Unemployment

Table 7. Teenage Labour Market (a), Tasmania (b)

Month	Employed		Unemployed		Labour force (^{'000})	Not in labour force (^{'000})	Civilian population aged 15-19 (^{'000})	Unem- ployment rate (%)	Unem- ployment population ratio (%)	Partici- pation rate (%)
	Full- time (^{'000})	Total (^{'000})	Looking for full-time work (^{'000})	Total (^{'000})						
ATTENDING NEITHER SCHOOL NOR A TERTIARY INSTITUTION FULL TIME										
1991 - August	8.5	10.3	3.2	3.4	13.7	0.6	14.3	24.7	23.8	95.9
1993 - August	6.3	8.1	3.5	3.6	11.7	2.0	13.7	30.9	26.3	85.3
1994 - June	7.3	10.0	2.2	2.2	12.2	1.7	14.0	18.2	15.7	87.6
July	7.4	9.6	2.4	2.5	12.1	1.4	13.6	20.5	18.4	89.5
August	6.9	9.3	2.5	2.7	12.0	1.6	13.7	22.8	19.7	88.0
ATTENDING SCHOOL OR A TERTIARY INSTITUTION FULL TIME										
1991 - August	..	4.4	0.6	1.2	5.5	16.4	21.9	21.8	5.5	25.1
1993 - August	..	4.2	0.8	1.7	5.9	14.9	20.8	28.8	8.2	28.4
1994 - June	0.3	4.9	0.2	1.3	6.3	14.0	20.3	20.6	6.4	31.0
July	0.5	5.7	0.3	1.2	6.9	13.7	20.6	17.4	5.8	33.5
August	..	4.9	0.2	0.9	5.8	14.7	20.5	15.5	4.4	28.3
TOTAL										
1991 - August	8.5	14.7	3.7	4.5	19.2	17.0	36.2	23.6	12.4	53.1
1993 - August	6.3	12.3	4.2	5.3	17.6	16.9	34.6	30.0	15.3	51.0
1994 - June	7.6	14.9	2.3	3.6	18.5	15.7	34.2	19.2	10.5	54.1
July	8.0	15.3	2.7	3.7	19.1	15.1	34.2	19.6	10.8	55.8
August	6.9	14.2	2.7	3.6	17.9	16.3	34.2	20.3	10.5	52.3

(a) Persons aged 15-19 years. (b) For explanation of terms and concepts, refer to *The Labour Force, Australia* (Catalogue No. 6203.0).

TEENAGE UNEMPLOYMENT Tasmania



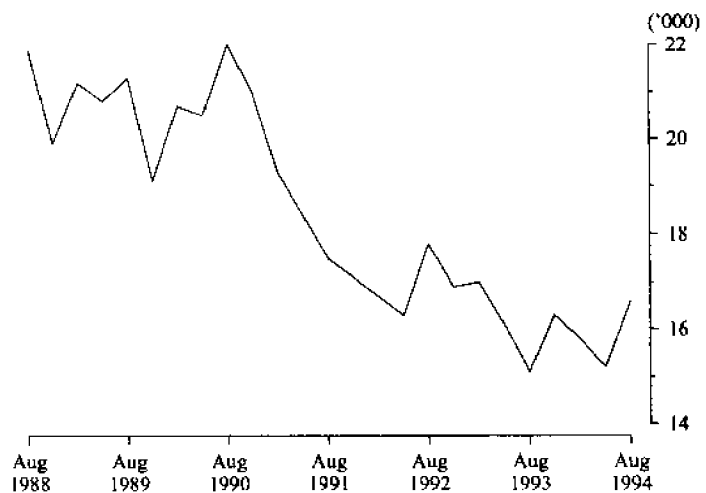
Employment and Unemployment

Table 8. All employed persons, occupation, Tasmania (a)

Occupation	August 1993	August 1994			Proportion of total employed	
	Persons	Males	Females	Persons	Aug 1993 (%)	Aug 1994 (%)
	('000)	('000)	('000)	('000)		
Managers and administrators	19.9	16.4	6.0	22.4	10.5	11.7
Farmers and farm managers	6.9	4.9	1.9	6.8	3.7	3.6
Managing supervisors	5.7	4.8	3.4	8.2	3.0	4.3
Other	7.3	6.7	0.7	7.4	3.9	3.9
Professionals	21.9	12.8	9.3	22.1	11.6	11.6
Building and professional engineers	1.6	1.6	0.1	1.6	0.8	0.8
Health diagnosis and treatment practitioners	2.5	0.9	0.7	1.6	1.3	0.8
School teachers	6.2	2.9	4.5	7.4	3.3	3.9
Business professionals	3.8	2.7	1.2	3.8	2.0	2.0
Other	7.8	4.7	2.8	7.7	4.1	4.0
Para-professionals	12.6	5.9	6.5	12.5	6.7	6.6
Engineering and building associates and technicians	1.7	1.1	0.2	1.3	0.9	0.7
Registered nurses	4.9	0.2	4.7	4.8	2.6	2.5
Other	6.0	4.6	1.6	6.4	3.2	3.4
Tradespersons	30.4	24.9	3.2	28.1	16.1	14.7
Metal fitting and machining tradespersons	2.5	1.9	-	1.9	1.3	1.0
Electrical and electronics tradespersons	6.1	3.9	0.1	4.0	3.2	2.1
Building tradespersons	7.6	7.1	0.1	7.2	4.0	3.8
Other	14.2	12.0	3.0	15.0	7.5	7.9
Clerks	33.6	8.7	21.3	30.1	17.8	15.8
Stenographers and typists	4.5	0.3	4.2	4.4	2.4	2.3
Receptionists, telephonists and messengers	4.7	0.2	4.3	4.6	2.5	2.4
Other	24.4	8.2	12.8	21.1	12.9	11.1
Salespersons and personal service workers	28.2	10.5	20.4	30.9	14.9	16.2
Sales representatives	2.5	1.9	0.5	2.3	1.3	1.2
Sales assistants	12.2	4.8	9.7	14.5	6.5	7.6
Other	13.5	3.8	10.2	14.1	7.2	7.4
Plant and machine operators, and drivers	15.1	13.8	2.8	16.6	8.0	8.7
Road and rail transport drivers	5.6	5.9	0.4	6.3	3.0	3.3
Machine operators	4.2	3.0	2.3	5.3	2.2	2.8
Other	5.3	4.9	0.1	5.0	2.8	2.6
Labourers and related workers	27.1	17.6	10.4	28.0	14.4	14.7
Trades assistants and factory hands	4.9	3.5	1.1	4.6	2.6	2.4
Agricultural labourers and related workers	6.1	4.4	1.4	5.8	3.2	3.0
Cleaners	5.8	2.3	4.3	6.5	3.1	3.4
Construction and mining labourers	1.8	1.6	-	1.6	1.0	0.8
Other	8.4	5.9	3.5	9.5	4.4	5.0
Total employed	188.8	110.6	79.9	190.7	100.0	100.0

(a) For explanation of terms and concepts, refer to *The Labour Force, Australia* (Catalogue No. 6203.0).

PLANT AND MACHINE OPERATORS, AND DRIVERS Tasmania



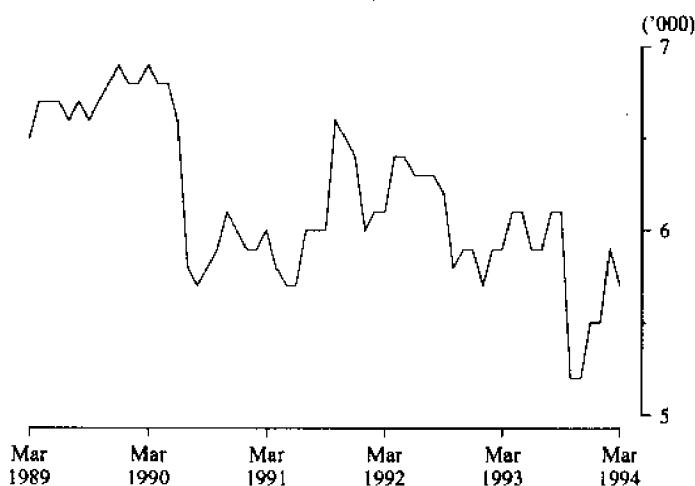
Employment and Unemployment

Table 9. Employed wage and salary earners, sector and industry, Tasmania (a)

Industry	Number of employees ('000), February 1994					Percentage distribution	
	Private	Public	Private and public			Feb. 1992	Feb. 1994
			Males	Females	Persons		
Agriculture, forestry, fishing and hunting	n.a.	0.7	n.a.	n.a.	n.a.	n.a.	n.a.
Mining	2.0	—	1.9	0.1	2.0	1.4	1.4
Manufacturing	18.0	0.1	13.5	4.6	18.1	16.8	13.0
Electricity, gas and water, construction	5.3	4.3	8.1	1.4	9.6	7.4	6.9
Wholesale and retail trade	27.4	—	15.6	11.9	27.4	19.0	19.7
Transport and storage	3.8	2.0	4.4	1.5	5.9	4.3	4.2
Communication	—	2.2	1.7	0.5	2.2	1.7	1.6
Finance, property and business services	10.2	0.9	4.8	6.4	11.2	9.1	8.1
Public administration and defence	—	8.5	5.3	3.3	8.5	7.4	6.1
Community services	16.9	24.7	15.6	26.1	41.7	24.3	30.0
Recreation, personal and other services	11.1	0.6	4.3	7.4	11.7	8.1	8.4
Total all industries	94.8	44.1	75.6	63.3	138.9	100.0	100.0

(a) For explanation of terms and concepts, refer to *Employed Wage and Salary Earners, Australia* (Catalogue No. 6248.0).

EMPLOYED WAGE AND SALARY EARNERS: TRANSPORT AND STORAGE INDUSTRIES Tasmania



Employment and Unemployment

Table 10. Average hours worked, Tasmania

Month	Average weekly total hours worked, all employed persons (a)			Average weekly overtime hours (b)		Percentage of employees working overtime (b)
	Males	Females	Persons	Per employee	Per employee working overtime	
1991 ...						
May	39.0	27.9	34.4	1.1	6.5	16.3
1993						
May	39.0	28.1	34.4	1.1	7.3	15.2
August	38.8	27.8	34.1	0.8	6.3	13.2
November	38.2	26.4	33.1	1.0	6.9	14.3
1994 ...						
February	37.6	25.8	32.7	1.0	6.9	14.0
May	39.4	27.2	34.2	0.9	6.4	14.0

(a) For explanation of terms and concepts, refer to *The Labour Force, Australia*, (Catalogue No. 6203.0). (b) For explanation of terms and concepts, refer to *Job Vacancies and Overtime, Australia* (Catalogue No. 6354.0).

Table 11. Job vacancies, Tasmania (a)

Period	Job Vacancies	
	Number	Rate (b) (%)
1991 —		
May	700	0.4
1993 —		
May	400	0.3
August	500	0.4
November	600	0.4
1994 . . .		
February	800	0.6
May	800	0.5

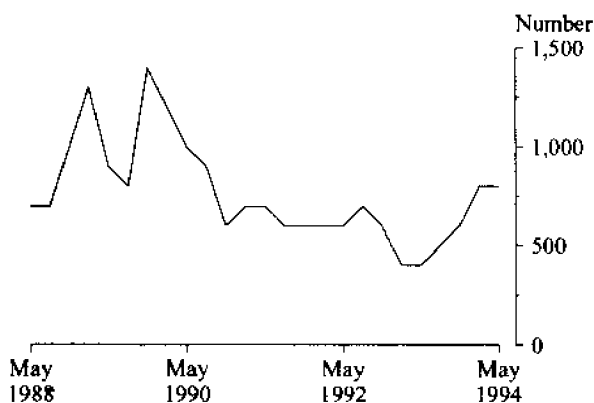
(a) For explanation of terms and concepts refer to *Job Vacancies and Overtime, Australia* (Catalogue No. 6354.0). (b) Job vacancies are expressed as a percentage of the number of job vacancies divided by the number of employees plus job vacancies.

Table 12. Industrial disputes, Tasmania (a)

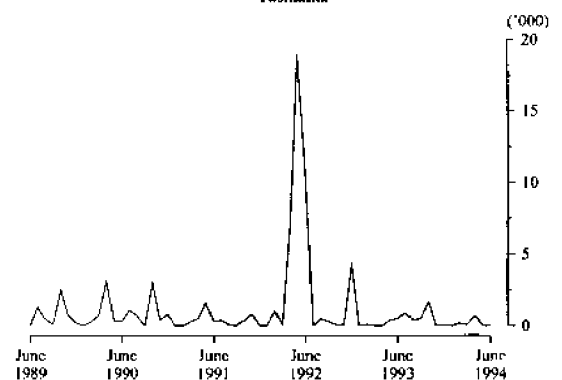
Month	Working days lost	Twelve months ending	Working days lost per thousand employees
1993 —		1993 —	
August	400	August	46
September	500	September	47
October	1 700	October	57
November	0	November	56
December	100	December	29
1994 —		1994 —	
January	0	January	31
February	200	February	30
March	100	March	30
April	700	April	35
May	0	May	33
June	0	June	30
Twelve months ended 1994 —			
June	4 600		

(a) For explanation of terms and concepts, refer to *Industrial Disputes, Australia* (Catalogue No. 6321.0).

JOB VACANCIES Tasmania



WORKING DAYS LOST DUE TO INDUSTRIAL DISPUTES Tasmania



Wages and Prices

Table 13. Average weekly earnings of employees, Tasmania (a) (\$)

Quarter	Survey reference period	Males			Females			Persons		
		Full-time adults		All males	Full-time adults		All females	Full-time adults		All employees
		Weekly ordinary time earnings	Weekly total earnings		Weekly ordinary time earnings	Weekly total earnings		Weekly ordinary time earnings	Weekly total earnings	
1991 - March	15 February	563.60	593.20	549.70	472.60	479.00	357.30	537.20	560.20	481.70
1993 - March	19 February	596.90	637.70	577.70	520.00	529.30	396.60	569.90	599.60	490.10
1993 - September	20 August	614.80	647.40	585.60	507.10	513.50	381.90	577.30	600.80	489.40
December	19 November	624.40	659.30	599.50	518.90	525.30	391.60	588.30	613.50	501.70
1994 - March	18 February	627.60	671.60	615.20	523.50	534.70	386.70	592.90	626.00	506.70

(a) For explanation of terms and concepts, refer to *Average Weekly Earnings, States and Australia* (Catalogue No. 6302.2).

Table 14. Weekly award rates of pay indexes, full-time adult employees Tasmania (a)

(Base: June 1985 = 100.0)

Industry	1991	1993	1994		
	Jul	Jul	May	Jun	Jul
Mining	133.6	137.7	137.7	137.7	137.7
Manufacturing	136.0	145.0	146.9	146.9	146.9
Electricity, gas and water	130.2	130.9	132.0	132.0	132.0
Construction	138.3	141.3	142.6	142.6	142.6
Wholesale trade	132.7	137.6	140.0	140.0	140.0
Retail trade	130.5	136.5	139.6	139.6	139.6
Transport and storage	134.9	137.9	138.9	138.9	138.9
Communication	132.1	135.4	135.4	135.4	135.4
Finance, property and business services	131.9	137.4	137.8	137.8	137.8
Public admin. and defence	131.5	135.2	148.3	148.3	148.3
Community services	133.5	140.3	140.8	140.8	140.9
Recreation, personal and other services	137.6	146.0	149.2	149.2	150.2
Total all industries	133.5	139.2	141.6	141.6	141.6

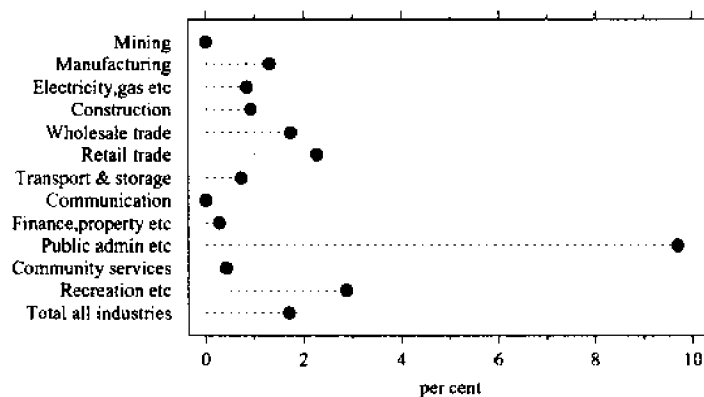
(a) For explanation of terms and concepts, refer to *Award Rates of Pay Indexes, Australia* (Catalogue No 6312.0).AWARD RATES OF PAY INDEX: TASMANIA
Annual Change to July 1994

Table 15. Summary of annual movements in wages and prices, Tasmania

Period	CPI. All groups Hobart	Price index of materials used in house building. All groups, Hobart	Price index of materials used in building other than house building. All groups, Hobart	Average weekly total earnings, full-time adult employees	Weekly award rates of pay index, full-time adult employees
Percentage change from previous year					
1991 —					
June	3.8	4.3	3.5	..	2.1
1993 —					
June	2.2	1.0	1.4	..	0.4
1993 ---					
December	3.3	2.3	2.2	..	1.3
1994 —					
January	..	2.7	1.8	..	1.5
February	..	2.4	1.7	4.4	1.7
March	2.6	3.1	0.5	..	1.7
April	..	p 3.0	p 1.1	..	1.7
May	..	p 3.3	p 0.9	n.a.	1.7
June	2.7	p 3.7	p 1.1	..	1.7
July	..	p 2.8	p 0.7	..	1.8

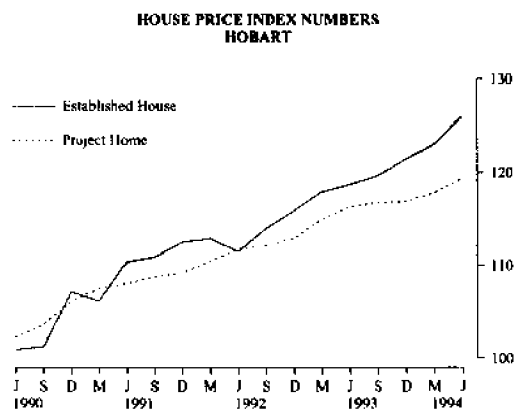
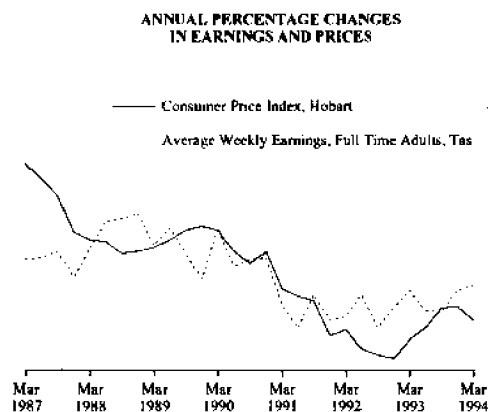
Table 16. House price index numbers (a), Hobart

(Base of each Index: 1989-90 = 100.0)

	Established house price index		Project home price index	
	Index	% change (b)	Index	% change (b)
1991-92	112.0	5.4	110.1	3.5
1992-93	116.6	4.1	114.1	3.6
1993-94	122.5	5.1	117.7	3.2
1991 —				
June	110.4	4.0	108.1	0.6
1993 —				
March	117.9	1.7	115.0	1.9
June	118.7	0.7	116.3	1.1
September	119.7	0.8	116.8	0.4
December	121.4	1.4	116.9	0.1
1994 —				
March	123.0	1.3	117.8	0.8
June	126.0	2.4	119.4	1.4

(a) Used in calculating the mortgage interest charges component of the Consumer Price Index.

(b) Percentage change over previous period.



Wages and Prices

Table 17. Consumer price index: Hobart & eight capital cities combined (a)

(Base of each index: year 1989-90 = 100.0) (b)

Year or quarter	Hobart					
	Food	Clothing	Housing (c)	Household equipment and operation	Transportation	Tobacco and alcohol
1991-92	106.1	105.7	98.8	109.1	106.9	111.5
1992-93	108.2	106.9	94.9	110.3	110.3	115.8
1993-94	111.7	106.6	94.0	111.9	112.2	133.7
Quarter 1991 —						
June	104.4	106.3	102.6	107.0	105.1	108.6
1993 —						
June	109.1	107.7	95.0	110.4	111.7	119.9
September	110.2	106.9	94.9	111.3	111.6	132.1
December	111.7	106.8	93.4	111.8	112.3	133.4
1994 —						
March	112.6	106.4	93.3	112.2	111.9	134.3
June	112.2	106.4	94.2	112.4	112.8	134.8
Percentage change between June quarter 1993 and June quarter 1994						
	+ 2.8	- 1.2	- 0.8	+ 1.8	+ 1.0	+ 12.4

Table 17. Consumer price index: Hobart & eight capital cities combined (a) (b)—continued (Base of each index: year 1989-90 = 100.0)

Year or quarter	Hobart				Weighted average of eight capital cities (c)	
	Health and personal care	Recreation and education	All groups		Percentage change over previous period	
			Index	Percentage change over previous period	Index	Percentage change over previous period
1991-92	122.7	106.1	107.1	+ 2.1	107.3	+ 1.9
1992-93	127.3	108.0	108.5	+ 1.3	108.4	+ 1.0
1993-94	136.1	110.2	111.7	+ 2.9	110.4	+ 1.8
Quarter 1991 —						
June	117.7	102.4	105.8	+ 0.6	106.0	+ 0.2
1993 —						
June	129.3	108.2	109.4	+ 0.3	109.3	+ 0.4
September	134.5	108.7	111.0	+ 1.5	109.8	+ 0.5
December	134.5	111.0	111.6	+ 0.5	110.0	+ 0.2
1994 —						
March	137.5	109.7	111.9	+ 0.3	110.4	+ 0.4
June	137.9	111.3	112.4	+ 0.4	111.2	+ 0.7
Percentage change between June quarter 1993 and June quarter 1994						
	+ 6.7	+ 2.9	+ 2.7	..	+ 1.7	..

(a) Further information on construction of CPI indexes is contained in the bulletin *The Australian Consumer Price Index Concepts, Sources and Methods* (Catalogue No. 6461.0). (b) The CPI is now published on a reference base of 1989-90 = 100.0. (c) Series from and including March 1989 has been affected by the change in treatment of mortgage interest charges.

Table 18. Price index of materials used in building other than house building: Hobart (Base year: 1989-90 = 100.0) (a)

Year or month	Index numbers for selected major building materials					
	Structural timber	Clay bricks	Ready mixed concrete	Precast concrete products	Steel decking, cladding etc.	Structural steel
1991-92	105.5	108.0	109.8	109.6	102.9	109.5
1992-93	108.2	111.9	113.4	109.9	104.2	111.7
1993-94 p	115.9	114.2	117.5	112.9	106.4	116.0
1991 —						
July	105.2	106.5	105.5	109.6	105.8	106.7
1993 —						
July	112.3	112.8	116.7	110.4	106.0	115.9
1993 —						
December	114.4	112.8	117.6	110.3	106.0	116.0
1994 —						
January	114.9	115.5	116.5	110.3	106.0	116.0
February	114.9	115.5	116.7	110.3	106.0	116.0
March	119.2	115.5	119.0	110.3	106.0	116.0
April p	120.3	115.5	118.7	120.6	107.6	116.0
May p	120.3	115.5	119.4	120.6	107.7	116.0
June p	122.6	115.6	117.9	120.6	107.7	116.0
July p	123.4	115.6	119.6	120.6	107.7	116.0
Percentage change between July 1993 and July 1994						
	+ 9.9	+ 2.5	+ 2.5	+ 9.2	+ 1.6	+ 0.1

Table 18. Price index of materials used in building other than house building: Hobart—continued (Base year: 1989-90 = 100.0) (a)

Year or month	Index numbers for selected major building materials						
	Reinforcing steel bar, fabric and mesh	Aluminium windows	Fabricated steel products (b)	Builders' hardware	Sand & aggregate	Paint & other coatings	Non-ferrous pipes & fittings
1991-92	108.0	98.7	105.2	111.9	123.6	112.3	111.9
1992-93	109.0	97.9	102.1	113.0	125.0	114.7	132.6
1993-94 p	109.1	100.5	106.6	115.7	129.6	114.1	133.1
1991 —							
July	105.7	98.6	105.1	111.0	123.6	108.5	110.3
1993 —							
July	110.5	101.8	107.7	115.1	128.9	113.9	130.4
1993 —							
December	109.7	101.9	106.8	114.6	129.3	114.0	131.0
1994 —							
January	109.2	101.9	105.9	116.1	129.3	114.0	131.0
February	109.2	103.2	106.1	115.6	129.3	114.0	129.8
March	108.0	98.6	106.1	117.0	129.3	114.0	129.8
April p	107.9	96.9	106.1	117.5	129.7	114.1	132.9
May p	107.9	96.9	106.1	116.6	129.7	114.8	132.9
June p	107.9	97.6	106.1	116.9	132.7	114.8	162.9
July	107.9	97.6	106.1	113.0	132.7	114.8	151.6
Percentage change between July 1993 and July 1994							
	- 2.4	- 4.1	- 1.5	- 1.8	+ 2.9	+ 0.8	+ 16.3

(a) The Price Index of Materials Used in Building Other than House Building is now published on a reference base of 1989-90 = 100.0.

(b) Previously 'Steel windows, doors, louvres and other fabricated steelwork'.

Wages and Prices

Table 18. Price index of materials used in building other than house building: Hobart— *continued* (Base year: 1989–90 = 100.0) (a)

Period	<i>Index numbers for special combination of building materials</i>					
	<i>All electrical materials</i>		<i>All mechanical services</i>		<i>All plumbing materials</i>	
	<i>Index</i>	<i>% change over previous period</i>	<i>Index</i>	<i>% change over previous period</i>	<i>Index</i>	<i>% change over previous period</i>
1991–92	105.6	+ 2.3	107.5	+ 2.7	108.8	+ 3.3
1992–93	103.3	– 2.2	108.1	+ 0.6	111.4	+ 2.4
1993–94 p	104.7	+ 1.4	109.6	+ 1.4	110.1	– 1.2
1991 —						
July	107.1	– 0.5	107.9	+ 0.3	108.8	—
1993 —						
July	105.3	—	107.9	– 0.1	110.3	– 0.2
1993 —						
December	103.6	– 1.1	110.0	– 0.1	108.7	– 0.3
1994 —						
January	104.6	+ 1.0	110.0	—	109.3	+ 0.6
February	103.4	– 1.1	109.4	– 0.5	107.8	– 1.4
March	103.2	– 0.2	109.6	+ 0.2	107.8	—
April p	105.0	+ 1.7	109.8	+ 0.2	109.5	+ 1.6
May p	105.1	+ 0.1	109.7	– 0.1	110.3	+ 0.7
June p	105.9	+ 0.8	111.0	+ 1.2	120.2	+ 9.0
July p	106.5	+ 0.6	110.8	– 0.2	116.2	– 3.3
Percentage change between July 1993 and July 1994						
		+ 1.1		+ 2.7		+ 5.3

Table 18. Price index of materials used in building other than house building: Hobart— *continued* (Base year: 1989–90 = 100.0) (a)

Period	<i>Index numbers for special combinations of building materials</i>			
	<i>All groups excluding electrical materials and mechanical services</i>		<i>All groups</i>	
	<i>Index</i>	<i>% change over previous period</i>	<i>Index</i>	<i>% change over previous period</i>
1991–92	107.2	+ 3.3	107.1	+ 3.1
1992–93	109.1	+ 1.8	108.2	+ 1.1
1993–94 p	111.0	+ 1.8	110.1	+ 1.8
1991 —				
July	105.8	+ 0.3	106.2	+ 0.1
1993 —				
July	111.2	+ 0.5	110.0	+ 0.6
1993 —				
December	111.2	+ 0.2	110.2	+ 0.1
1994 —				
January	111.3	+ 0.1	110.3	+ 0.1
February	111.3	—	110.1	– 0.2
March	109.7	– 1.4	108.9	– 1.1
April p	110.7	+ 0.9	109.8	+ 0.8
May p	110.9	+ 0.2	110.0	+ 0.2
June p	111.3	+ 0.4	110.5	+ 0.5
July p	111.6	+ 0.3	110.8	+ 0.3
Percentage change between July 1993 and July 1994				
		+ 0.4		+ 0.7

(a) The Price Index of Materials Used in Building Other than House Building is now published on a reference base of 1989–90 = 100.0.

Table 19. Miscellaneous indicators of production, Tasmania

Year or month	Dairy products (a)			Staff-hours worked (b)	
	Whole milk (e) (million litres)	Factory butter (f) (tonnes)	Factory cheese (tonnes)	Textile manufacturing (g) (‘000)	Vegetable preserving (‘000)
1991-92	371.9	5 589	20 022	1 549	2 068
1992-93	412.9	6 287	20 043	1 740	1 915
1993-94	447.3	7 846	22 686	1 575	2 002
1991 — June	10.1	277	210	129	156
1993 — June	13.1	341	764	151	170
1994 — April	29.6	684	1 598	124	177
May	23.2	428	1 234	161	201
June	11.7	227	684	145	164

Table 19. Miscellaneous indicators of production, Tasmania
— continued

Year or month	Ready-mixed concrete (c) (‘000 m ³)	News-print (‘000 tonnes)	Refined zinc (‘000 tonnes)	Metal refin. index (d)	Chemical and fertilisers			Gas (‘000 MJ)
					Sulphuric acid (‘000 tonnes)	Super phosphate (‘000 tonnes)	Electricity (million kW.h)	
1991-92	245.6	202.8	206.0	110.0	359.1	75.9	8 967	63 377
1992-93	254.4	228.4	212.0	109.4	355.5	74.6	8 864	61 432
1993-94	n.y.a.	208.9	193.8	105.5	362.0	n.y.a.	8 855	55 767
1991 June	17.3	14.7	19.2	112.5	32.2	4.6	761	7 129
1993 — June	21.0	18.7	22.2	124.3	33.9	7.6	810	6 750
1994 — April	21.4	15.4	13.8	89.3	30.5	9.8	672	4 176
May	23.5	16.9	18.1	100.2	26.5	8.7	766	5 965
June	n.y.a.	16.8	17.3	97.8	26.6	n.y.a.	761	5 871

(a) Source: Australian Dairy Corporation. (b) Changing productivity per staff-hour makes these indicators unsatisfactory for long-term comparisons. (c) For sale as such; excludes production for use within the same enterprise. (d) Metallurgical refining index (Base: 1979-80 = 100.0) Output from selected establishments covering the smelting and refining of ferro-alloys, zinc and aluminium. The weighting pattern is based on the establishments' value added as derived from the 1979-80 Manufacturing Census. For multi-product establishments, value added was apportioned to products on the basis of gross receipts from each product. (e) Includes the whole milk equivalent of farm cream intake. (f) Includes butter equivalent of butter oil. (g) Includes spinning, weaving and carpetmaking. Reported by establishments which manufacture textiles only, or manufacture clothing and textiles in the one plant.

Production

Table 20. Livestock slaughtering, Tasmania: numbers ('000)

Year or month	Cattle			Sheep	Lambs	Pigs
	Bulls, bullocks and steers	Cows and heifers	Calves			
1991-92	104.7	93.6	32.3	446.7	489.8	84.8
1992-93	99.0	90.4	32.7	473.4	456.5	92.5
1993-94 p	101.8	85.2	23.2	526.1	437.8	95.8
1991 —						
July	8.7	5.9	1.6	15.4	38.9	6.2
1993 —						
July	8.9	7.6	1.1	34.7	33.2	8.9
August	6.2	4.5	7.5	18.5	25.2	6.9
September	6.0	5.1	10.8	30.9	27.7	8.1
October	7.7	6.4	2.7	31.1	30.0	6.4
November	7.7	7.3	0.3	39.7	32.0	7.9
December	9.8	8.4	0.1	46.0	39.6	11.2
1994 —						
January p	8.7	6.1	0.1	50.1	34.1	6.6
February p	7.6	6.9	0.1	60.4	38.1	6.6
March p	11.4	8.1	0.1	68.6	49.0	8.2
April p	9.5	8.3	0.2	41.3	37.6	7.5
May p	9.5	9.1	0.2	49.6	38.7	7.8
June p	8.8	7.5	0.4	55.3	52.6	9.9
July p	6.4	4.8	1.8	31.7	39.3	7.6

Table 21. Livestock slaughtering, Tasmania: Seasonally adjusted and trend series

Month	Seasonally adjusted			Trend series (a)		
	Cattle and calves	Sheep and lambs	Pigs	Cattle and calves	Sheep and lambs	Pigs
1991 —						
July	15 642	65 377	6 365	17 936	78 748	6 689
1993 —						
July	18 000	82 697	8 543	17 521	83 237	7 850
August	16 846	76 050	7 286	17 865	84 817	7 748
September	19 298	99 372	8 355	18 219	84 413	7 725
October	18 541	84 927	6 443	18 424	82 784	7 810
November	16 861	73 652	8 017	18 404	80 419	7 939
December	21 006	77 950	8 711	18 127	77 139	8 004
1994 —						
January	16 899	69 764	8 653	17 759	74 492	8 024
February	15 688	76 627	7 679	17 364	74 257	7 979
March	17 716	85 883	7 512	16 979	76 995	7 895
April	16 493	65 114	7 361	16 591	81 491	7 829
May	16 510	77 913	7 944	16 167	86 512	7 839
June	17 095	115 865	8 709	15 674	91 566	7 890
July	13 316	91 693	7 653	15 396	96 505	7 967

(a) Trend estimates may be revised as data for later months become available.

Table 22. Meat production, Tasmania

(tonnes)

Year or month	Meat (carcass weight)					Total
	Beef	Veal	Mutton	Lamb	Pigmeat (a)	
1991-92	45 266	665	8 355	8 070	5 168	67 524
1992-93	44 925	692	8 949	7 456	5 749	67 770
1993-94 p	47 458	515	9 992	7 047	6 019	71 031
1991 —						
July	3 266	33	277	636	377	4 589
1993 —						
June	4 213	6	631	646	534	6 029
July	4 080	22	643	530	546	5 821
August	2 566	161	343	401	417	3 888
September	2 621	235	570	441	493	4 359
October	3 520	60	577	479	384	5 020
November	3 780	6	759	506	480	5 531
December	4 555	2	874	635	686	6 752
1994 —						
January p	3 966	1	959	550	414	5 891
February p	3 784	1	1 208	586	411	5 990
March p	5 117	3	1 317	804	514	7 754
April p	4 537	5	784	616	477	6 419
May p	4 970	8	929	634	470	7 011
June p	3 962	10	1 030	864	728	6 594
July p	2 789	39	628	715	334	4 505

(a) Includes pork used for production of bacon and ham.

Table 23. Principal mineral concentrates produced, Tasmania

(Source: Tasmanian Development and Resources)

('000 tonnes)

Year or quarter	Concentrate								
	Copper	Iron (pellets)	Iron pyrite	Lead	Lead-copper	Lead-zinc	Tin	Tungsten	Zinc
1990-91	84.3	1 488.7	58.7	74.5	13.1	66.5	10.6	1.4	294.0
1991-92	97.4	1 451.6	80.2	86.2	5.5	84.9	10.7	0.5	335.0
1992-93	107.6	1 458.9	94.5	90.7	1.2	69.5	12.1	0.0	454.3
1990 —									
June	15.9	598.7	16.8	11.9	8.5	7.6	4.4	0.6	62.9
1991 —									
December	25.8	399.8	17.9	18.8	1.3	22.7	2.5	0.1	78.3
1992 —									
March	21.4	294.8	20.6	23.4	0.8	24.4	2.3	0.1	93.8
June	22.7	388.3	20.9	18.8	1.9	15.0	3.0	0.1	71.5
September	25.1	385.8	20.4	27.5	1.2	18.2	3.5	0.0	126.0
December	26.5	386.5	24.3	18.3	0.0	11.4	2.9	0.0	117.3
1993 —									
March	26.4	305.0	23.4	22.5	0.0	17.9	2.3	0.0	128.0
June	29.7	381.6	26.4	22.4	0.0	22.0	3.4	0.0	83.0

Production

Table 24. Sawmills and plywood mills: Logs delivered and timber produced, Tasmania ('000 m³)

Year or quarter	Tasmanian-grown logs delivered					Sawn, peeled and sliced timber produced (a)				
	Hardwoods		Softwoods			Hardwoods		Softwoods		
	Euca-lypts	Other hardwoods (b)	Plant-ation (c)	Natives (d)	Total	Euca-lypts	Other hardwoods (b)	Plant-ation (c)	Natives (d)	Total
1991-92	470.4	8.6	325.0	1.6	805.6	162.8	3.7	130.1	0.4	297.1
1992-93	554.5	13.0	312.8	2.8	883.2	188.9	2.9	131.6	0.7	324.1
1993-94	572.2	15.3	299.2	1.5	888.1	200.2	3.1	141.1	0.5	344.8
1992 —										
June	132.0	1.9	83.5	0.2	217.7	44.2	0.6	33.0	0.1	78.0
September	129.2	2.9	90.6	1.9	224.7	48.7	0.7	38.2	0.3	88.0
December	133.1	2.1	81.0	0.2	216.5	46.9	0.7	33.7	0.2	81.5
1993 —										
March	125.9	3.9	72.9	0.3	203.0	41.4	0.7	30.6	0.1	72.7
June	166.3	4.1	68.3	0.3	239.0	52.0	0.8	29.0	0.1	81.9
September	158.9	2.0	75.6	0.4	236.9	53.5	0.7	33.8	0.1	88.1
December	129.8	3.8	70.3	0.3	204.2	49.5	0.7	35.1	0.1	85.5
1994 —										
March	137.2	5.0	77.3	0.4	219.8	45.7	0.6	38.1	0.1	84.5
June	146.3	4.5	76.0	0.4	227.2	51.3	1.1	34.1	0.2	86.7

(a) Includes plywood, veneer and sliced timber production converted to an equivalent cubic measurement. (b) Includes blackwood, myrtle, sassafras etc.

Table 25. Chipping and grinding of wood (a), Tasmania

Year or quarter	Producing locations (no.) (b)	Materials used ('000 m ³) (c)			Chipped and ground wood production ('000 tonnes green weight)
		Logs delivered (d)	Sawmill offcuts		
1991-92	33	3 173.1	283.8	3 356.0	
1992-93	31	3 350.6	295.8	3 565.8	
1993-94	30	3 448.8	339.8	3 726.1	
1992 —					
June	33	647.7	74.5	682.7	
September	32	886.9	82.6	957.9	
December	32	756.0	75.1	820.6	
1993 —					
March	31	805.0	62.2	826.7	
June	30	902.7	76.0	960.6	
September	31	970.4	88.3	1 027.9	
December	31	818.5	96.9	885.8	
1994 —					
March	31	818.3	71.3	868.3	
June	30	841.6	83.3	944.0	

(a) Both hardwoods and softwoods, separate details are not available. (b) Capable of producing at end of year or actually producing during quarter.

Table 26. Logs delivered for milling or chipping, Tasmania ('000 m³)

Year or quarter	Sawmilling and plywood milling			Chipping and grinding (a)			Total		
	Crown land (b)	Private land	Total	Crown land (b)	Private land	Total	Crown land (b)	Private land	Total
1991-92	608.5	197.1	805.6	1 757.2	1 415.9	3 173.1	2 365.7	1 613.0	3 978.7
1992-93	698.9	184.3	883.2	1 753.4	1 597.2	3 350.6	2 452.3	1 781.5	4 233.7
1993-94	691.6	196.6	888.1	1 697.0	1 751.8	3 448.8	2 388.8	1 948.4	4 336.9
1992 —									
June	167.1	50.6	217.7	379.9	267.8	647.7	547.0	318.4	865.4
September	183.2	41.4	224.7	434.9	452.0	886.9	618.2	493.4	1 111.6
December	173.2	43.3	216.5	408.0	348.0	756.0	581.2	391.2	972.5
1993 —									
March	150.6	52.4	203.0	437.1	367.9	805.0	587.8	420.3	1 008.0
June	191.8	47.2	239.0	473.3	429.4	902.7	665.1	476.6	1 141.7
September	180.3	56.5	236.9	488.1	482.2	970.4	668.5	538.7	1 207.2
December	160.6	43.6	204.2	417.5	401.0	818.5	578.1	444.6	1 022.8
1994 —									
March	169.7	50.1	219.8	393.7	424.6	818.3	563.4	474.7	1 038.1
June	180.9	46.4	227.2	397.7	443.9	841.6	578.6	490.3	1 068.8

(a) Logs used are generally below sawmilling standard; includes log equivalent of limbwood and billets. (b) Comprises all areas (including concession areas) from which royalties are payable to the Forestry Commission.

Table 27. Building approvals, Tasmania

Year or month	New residential building			Value of total dwelling units (\$'000)	Value of alter- ations and additions (a) to residential building (\$'000)	Value of non-residential building (b)		Total value of building (\$'000)
	No. of houses	No. of other residential buildings (c)	Total no. of dwelling units			Private (\$'000)	Total (\$'000)	
1991-92	2 869	1 034	3 903	260 296	32 637	68 980	105 941	398 873
1992-93	2 956	1 138	4 094	275 262	33 050	62 416	103 107	411 419
1993-94	3 113	1 034	4 147	301 963	39 522	81 251	145 922	487 407
1991— July	189	63	252	17 486	3 463	11 076	12 022	32 971
1993 — June	255	85	340	23 704	2 305	8 654	13 222	39 231
1994 — April	243	36	279	20 449	3 740	9 620	10 799	34 988
May	271	77	348	24 627	4 337	6 555	13 264	42 228
June	241	65	306	23 327	3 098	7 519	11 612	38 037
July	212	97	309	20 883	3 213	6 161	7 121	31 217

(a) Valued at \$10 000 and over. (b) Comprises non-residential building (new plus alterations and additions) valued at \$30 000 and over from July 1988, and valued at \$50 000 and over from July 1990. Previous figures are for values of \$10 000 and over. (c) New individual dwelling units (e.g. flats, home units and villa units).

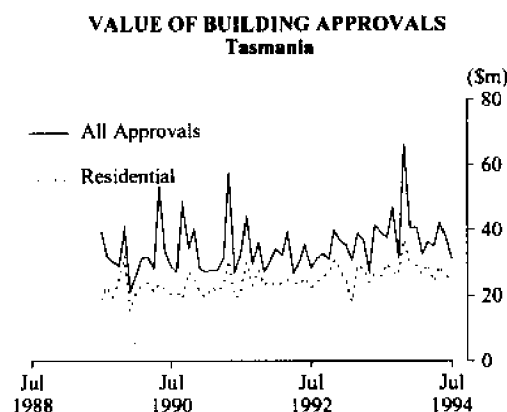


Table 28. Dwelling commencements, Tasmania

Year or month	New residential building						No. of other residential buildings (a)	Total no. of dwell- ing units
	No. of houses							
	Double brick	Brick vener	Fibre cement	Timber	Other and not stated	Total houses		
1991-92	238	1 866	67	500	78	2 749	1 024	3 773
1992-93	277	1 933	103	447	65	2 825	1 129	3 954
1993-94	306	2 120	103	441	79	3 049	973	4 022
1991 — June	9	125	8	34	5	181	81	262
1993 — June	15	175	9	20	10	229	117	346
1994 — March	18	215	17	47	8	305	110	415
April	22	164	9	32	8	235	39	274
May	28	174	10	24	6	242	73	315
June	22	192	14	31	9	268	77	345

(a) New individual dwelling units (e.g. flats, home units and villa units).

Table 29. Banking statistics, Tasmania (a) (b) (\$m)

Month	Deposits				
	Current bearing interest	Current – not bearing interest	Fixed	Investment savings accounts	Statement savings accounts
1993 —					
October	465	314	1 206	(d) 599	201
November	476	311	1 210	602	200
December	533	308	1 223	603	200
1994 —					
January	526	301	1 213	605	198
February	516	292	1 231	605	196
March	520	309	1 204	600	193
April	512	319	1 194	604	195
May	509	301	1 208	605	196
June	514	303	1 232	609	197
July	519	310	1 256	614	199

Table 29. Banking statistics, Tasmania (a) (b) — continued (\$m)

Month	Deposits — continued			Loans (c)
	Passbook/School savings accounts	Other	Total	
1993 —				
October	(d) 273	162	3 220	3 519
November	271	162	3 233	3 560
December	266	162	3 294	3 596
1994 —				
January	263	159	3 265	3 585
February	261	160	3 261	3 629
March	256	162	3 244	3 646
April	256	161	3 242	3 673
May	253	158	3 230	3 718
June	251	157	3 263	3 841
July	249	150	3 297	3 872

(a) Due to changes to the *Banking Act 1959* in December 1989, which removed the distinction between trading and savings banks, figures previously published in this table are no longer comparable with those shown above. (b) Details are the averages of weekly figures for each month. The figures are derived from returns submitted by banks authorised under the *Banking Act* together with similar returns voluntarily submitted by the State banks; they exclude the Reserve Bank. (c) Excludes non-resident loans. (d) Affected by reclassification of certain accounts.

Table 30. Private new capital expenditure by type of asset, Tasmania (a) (\$m)

Year or quarter	New buildings and structures	Equipment, plant, and machinery	Total
1988–89	182	592	774
1989–90	88	487	575
1990–91	180	416	596
1991–92	79	359	438
1992–93	103	340	443
1992 —			
December	17	122	139
1993 —			
March	35	58	93
June	35	88	123
September	17	76	94
December	14	71	85
1994 —			
March	12	42	54

(a) Estimates based on a sample survey and therefore subject to sampling variability. Covers selected industries only — mining, manufacturing, finance, property and other selected industries.

Table 31. Passenger arrivals and departures, Tasmania (a)

(Source: Department of Tourism, Sport & Recreation)

Period	Arrivals				Cruise ships	
	By air			Total	Arrivals	Departures
	Interstate	Inter-national	By sea			
				Total	departures (b)	
1990	555 631	8 629	120 004	684 264	679 833	3 255
1991	625 366	5 897	131 375	762 638	764 731	6 663
1992	652 092	4 428	114 969	771 489	761 109	4 608
1993	694 244	5 144	115 381	814 769	814 835	2 033
1993 —						
March	57 002	449	13 040	70 491	73 559	586
1994 —						
January	73 470	473	12 536	86 479	103 610	1 596
February	63 506	413	12 324	76 243	69 881	2 470
March	66 848	414	13 054	80 316	85 030	1 064

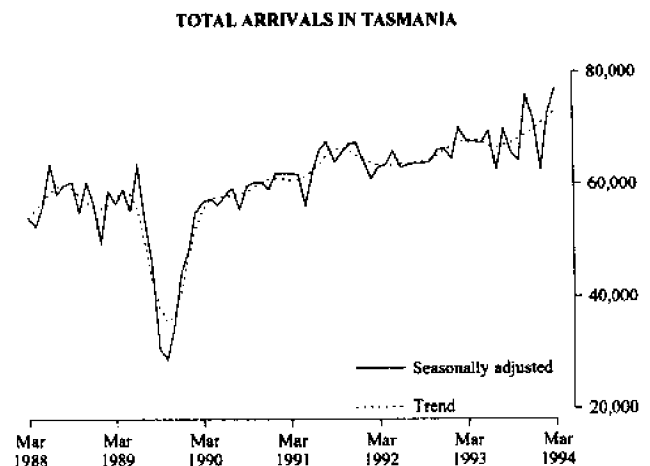
(a) The following persons are not included in these statistics: passengers under three years of age accompanied by an adult; passengers travelling on chartered flights with minor carriers; passengers travelling on private or VIP flights; and passengers from or departing for overseas other than direct flights to New Zealand. (b) The proportion of departing passengers who were visitors was shown to be about 58 per cent in the 1981 Tasmanian Visitor Survey, 55 per cent in the 1984 Tasmanian Visitor Survey, about 53 per cent in the 1986 Tasmanian Visitor Survey, almost 65 per cent in the 1990 Tasmanian Visitor Survey, and just over 58 per cent in the 1993 Tasmanian Visitor Survey.

Table 32. Total passenger arrivals by air and sea into Tasmania

Period	Original	Seasonally	Trend
		adjusted (a) (b)	
1993 —			
March	70 491	67 507	67 825
1994 —			
January	86 479	62 688	70 825
February	76 243	72 692	71 837
March	80 316	77 140	73 161

(a) Prior adjustments for the changing dates of Easter have been made.

(b) There is an annual recalculation of seasonal adjustment factors to include the most recent year's arrivals. This occurs at the end of each financial year and may cause revisions to previously published seasonally adjusted and trend figures. A full time series of seasonally adjusted and trend series from January 1971 is available on request: telephone (002) 20 5870.



Source: Source: Dept. of Tourism, Sport & Recreation

Table 33. Accommodation statistics, Tasmania

HOTELS, MOTELS, ETC. WITH FACILITIES

Period	Number of establishments	Guest rooms	Room nights		Room occupancy rate (%)	Takings from accommodation (\$'000)
			Seasonally adjusted	Trend estimates		
March quarter —						
1992	172	5 183		n.a.	58.7	19 725
1993	180	5 183			65.6	22 068
1994	178	5 334			66.2	22 812
1992 —						
January	n.a.	n.a.	74 123	74 853	58.1	6 735
February	n.a.	n.a.	74 094	74 042	56.1	5 965
March	172	5 183	71 333	73 413	61.7	7 025
1993 —						
January	n.a.	n.a.	80 786	79 948	63.0	7 427
February	n.a.	n.a.	82 376	80 754	63.5	6 628
March	180	5 183	81 791	80 878	70.2	8 012
1994 —						
January	n.a.	n.a.	81 221	85 075	60.8	7 294
February	n.a.	n.a.	87 780	85 663	65.7	7 001
March	178	5 334	85 543	85 892	72.2	8 518

HOLIDAY UNITS

Period	Number of establishments	Number of units	Unit nights		Unit occupancy rate (%)	Takings from accommodation (\$'000)
			Seasonally adjusted	Trend estimates		
March quarter —						
1992	45	729		n.a.	63.1	3 018
1993	45	730			72.3	3 471
1994	53	797			70.1	3 725
1992 —						
January	n.a.	n.a.	11 329	10 894	74.9	1 296
February	n.a.	n.a.	10 465	10 602	57.5	856
March	45	729	9 980	10 440	56.6	866
1993 —						
January	n.a.	n.a.	11 956	12 176	78.9	1 399
February	n.a.	n.a.	12 597	12 111	69.0	1 004
March	45	730	12 131	11 923	68.8	1 068
1994 —						
January	n.a.	n.a.	12 522	12 651	75.7	1 407
February	n.a.	n.a.	13 083	12 808	65.5	1 087
March	53	797	13 215	12 984	68.6	1 231

CARAVAN PARKS

Period	Number of establishments	Number of sites and cabins (a)	Site occupancy rate (b)	Takings from accommodation (\$'000)
March quarter —				
1992	68	6 317	32.3	2 471
1993	67	6 371	39.0	2 499
1994	70	6 715	36.4	2 595
1992 —				
January	n.a.	n.a.	43.7	1 102
February	n.a.	n.a.	29.5	717
March	68	6 317	23.6	652
1993 —				
January	n.a.	n.a.	47.0	1 039
February	n.a.	n.a.	37.7	799
March	67	6 371	32.2	661
1994 —				
January	n.a.	n.a.	42.7	1 050
February	n.a.	n.a.	35.1	792
March	70	6 715	31.4	753

of quarter. (b) % in series fi

1992.

Table 34. Registrations of new motor vehicles (a), Tasmania

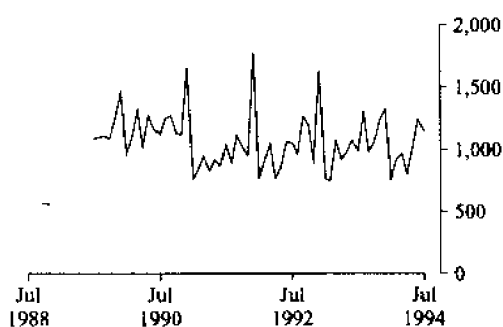
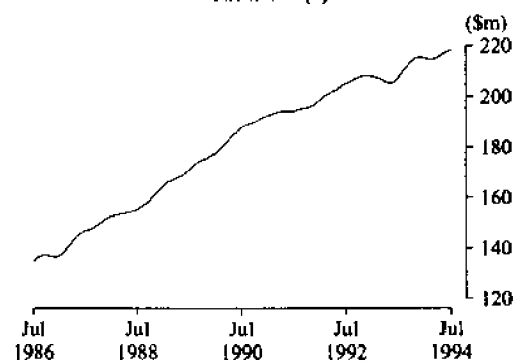
Year or month	Passenger vehicles	Other vehicles (b)	Motor cycles	Total
1991	9 572	2 395	394	12 361
1992	9 881	2 555	371	12 807
1993	10 019	2 478	440	12 937
1992 —				
July	821	234	28	1 083
1993 —				
August	1 089	211	25	1 325
September	798	187	31	1 016
October	883	182	29	1 094
November	1 027	206	43	1 276
December	1 128	205	86	1 419
1994 —				
January	623	143	25	791
February	734	195	38	967
March	729	238	32	999
April	591	215	30	836
May	743	274	28	1 045
June	860	383	25	1 268
July	944	208	29	1 181

(a) Includes State and Commonwealth Government-owned motor vehicles other than those belonging to the defence services. Excludes tractors, plant and equipment, caravans and trailers. (b) Comprises utilities, panel vans, rigid and articulated trucks and other truck-type vehicles (i.e. motor vehicles designed for purposes other than freight carrying, e.g. campervans, tow trucks, ambulances and hearses) and buses.

Table 35. Turnover of retail establishments at current prices, Tasmania

Period	Original (\$m)	Trend estimates (a)	
		(\$m)	% change from corresponding month of previous year
1992 — July	202.0	205.2	5.4
1993 — July	202.0	207.2	0.9
August	190.5	209.6	1.8
September	204.8	211.7	2.5
October	212.3	213.8	3.1
November	222.3	215.2	3.4
December	287.2	215.7	3.6
1994 — January	206.3	r 215.3	3.6
February	197.6	r 214.7	r 3.5
March	217.7	r 214.8	r 3.9
April	203.5	r 215.5	r 4.8
May	212.9	r 216.4	r 5.5
June	204.0	r 217.6	r 5.8
July	212.1	p 218.4	5.4

(a) Trend estimates revised each month.

REGISTRATIONS OF NEW MOTOR VEHICLES
TASMANIA, JULY 1994
(excluding motorcycles)RETAIL TURNOVER - TREND
Tasmania (a)

Major Statistical Indicators

Table 36. Major statistical indicators — Australia and State comparisons

	<i>NSW</i>	<i>Vic.</i>	<i>Qld</i>	<i>SA</i>	<i>WA</i>	<i>Tas.</i>	<i>Australia (a)</i>
Population							
Estimated resident population, March 1994 ('000)	6 041.3	4 473.6	3 178.1	1 468.6	1 695.7	472.2	17 803.3
Proportion of Australian population, March 1994 (%)	33.9	25.1	17.9	8.2	9.5	2.7	100.0
Population growth rate, 12 months to March 1994 (%)	0.8	0.2	2.6	0.5	1.4	0.2	1.0
Labour Force							
Employment growth, 12 months to August 1994 (trend series) (%)							
Males	3.5	2.6	5.0	1.0	2.4	2.6	3.1
Females	2.7	3.3	5.7	2.7	5.8	0.7	3.6
Persons	3.2	2.9	5.3	1.8	3.8	1.8	3.3
Unemployment rate (trend series), August 1994 (%)	9.4	10.5	9.0	10.6	8.2	10.3	9.5
Unemployment growth, 12 months to August 1994 (trend series) (%)	- 11.2	- 15.8	- 13.8	1.2	- 8.0	- 21.2	- 11.8
Participation rate (trend series), August 1994 (%)	61.5	62.9	63.7	62.1	65.9	59.3	62.9
Average weekly overtime worked per employee, May 1994 (hours)	1.4	1.2	1.4	1.0	1.5	0.9	1.3
Job vacancy rate, May 1994 (%)	0.9	1.0	0.7	0.5	0.8	0.5	0.8
Working days lost through industrial disputes, 12 months to June 1994 (days per '000 employees)	94	89	151	34	51	30	94
Wages and Prices							
Average weekly total earnings, full-time adult employees (original series) May 1994 (\$)							
Males	730.0	698.5	671.9	664.3	717.0	662.4	705.9
Females	582.4	569.0	529.3	567.1	539.1	537.2	566.7
Persons	676.4	651.9	623.3	632.9	651.5	619.3	656.1
Average weekly total earnings, full-time adult employees, growth rate, 12 months to February 1994 (%)	4.6	1.6	4.6	2.8	1.0	4.4	3.3
Consumer price index, all groups, annual growth to June quarter 1994 (%)	1.5	1.7	1.6	1.9	2.2	2.7	1.7
Building							
Percentage change in the number of new residential dwelling units approved in twelve months ended July 1994, over the same period previous year	2.0	7.5	13.1	- 6.9	18.6	0.2	7.3
Finance and Retail Trade							
Percentage change in private new capital expenditure, twelve months ended March 1994, over the same period previous year	- 11.1	22.3	- 0.4	- 15.7	12.8	- 17.6	2.3
Percentage change in trend estimates turnover of retail establishments, July 1994 (change from corresponding month of the previous year)	6.9	5.9	6.9	4.4	6.4	5.4	6.8
Transport							
Percentage change in number of new motor vehicles (excluding motorcycles) registered twelve months ended July 1994, over the same period previous year	8.8	7.8	7.7	1.4	7.8	0.25	7.6
Agriculture							
Percentage change in the number of livestock slaughtered twelve months ended July 1994 over the same period previous year							
Cattle and calves	- 4.4	- 0.3	- 3.9	- 7.4	- 3.7	- 7.4	- 3.5
Sheep and lambs	7.7	- 5.3	- 25.9	11.3	- 12.6	3.6	- 1.2
Tourism							
Room occupancy rates for hotels, motels etc. with facilities, March quarter 1994 (%)	56.5	50.9	59.4	50.0	57.0	66.2	55.9
Australian National and State Accounts							
Percentage change in GSP (GDP) Trend Series							
March qtr 1994 to June qtr 1994	1.7	1.3	1.7	1.3	3.1	2.2	1.5
June qtr 1993 to June qtr 1994	6.1	3.9	6.5	5.1	8.9	5.1	5.5

(a) Australian totals include the ACT and NT.



For more information ...

The ABS publishes a wide range of statistics and other information on Australia's economic and social conditions. Details of what is available in various publications and other products can be found in the *ABS Catalogue of Publications and Products* available at all ABS Offices (see below for contact details).

Information Consultancy Service

Information tailored to special needs of clients can be obtained from the Information Consultancy Service available at ABS Offices (see Information Inquiries below for contact details).

National Dial-a-Statistic Line

0055 86 400

(Steadycom P/L, premium rate 25c/21 4 secs.)

This number gives 24-hour access, 365 days a year for a range of statistics.

Electronic Data Services

Selections of most frequently requested statistics are available, updated daily, on DISCOVERY (Key *656#). For more details on electronic data services available, contact Information Services in any of the ABS Offices (see Information Inquiries below for contact details).

Bookshops and Subscriptions

There are over 400 titles of various publications available from ABS bookshops in all ABS Offices (see below Bookshop Sales for contact details). The ABS also provides a subscription service through which nominated publications are provided by mail on a regular basis at no additional cost (telephone Publications Subscription Service toll free on 008 02 0608 Australia wide).

Sales and Inquiries

Regional Offices	Information Inquiries	Bookshop Sales
SYDNEY (02)	268 4611	268 4620
MELBOURNE (03)	615 7000	615 7829
BRISBANE (07)	222 6351	222 6350
PERTH (09)	323 5140	323 5307
ADELAIDE (08)	237 7100	237 7582
HOBART (002)	20 5800	20 5800
CANBERRA (06)	207 0326	207 0326
DARWIN (089)	43 2111	43 2111
National Office		
ACT (06)	252 6007	008 020 608

ABS Email Addresses

Keylink	STAT.INFO/ABS
X.400	(C:AU, A:TELMEMO, O:ABS, SN:INFO, FN:STAT)
Internet	STAT.INFO@ABS. TELEMEMO.AU



© Commonwealth of Australia 1994

Recommended retail price: \$10.00



2130360010949
ISSN 1034-1803